

**AXOR Citterio E**  
**Shower thermostat for exposed installation**  
 Surfaces: **Chrome** Article Number: **36160000**



## Description

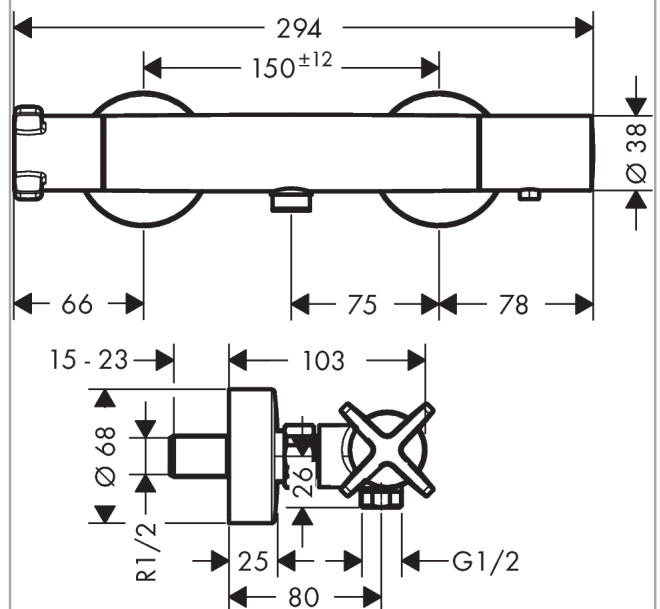
### product features

- 1 outlet
- centre distance:  $150 \pm 12$  mm
- thermostat cartridge, ceramic valve  $180^\circ$
- min. operating pressure: 1 bar
- max. operating pressure: 10 bar
- safety lock at  $40^\circ$  C
- temperature limitation adjustable
- non-return valve
- with silencer
- connection type: s-shaped connections
- connection dimension: DN15
- PA-IX 18988/IB
- ACS 19 ACC LY 061, valide jusqu'au 06.03.2024
- Kiwa UK 1508715
- WRAS 1511311

## Product image



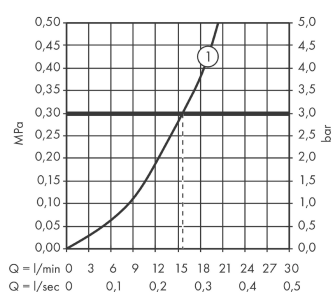
## Scale drawing



**AXOR Citterio E**  
**Shower thermostat for exposed installation**  
 Surfaces: **Chrome** Article Number: **36160000**



## Flowchart

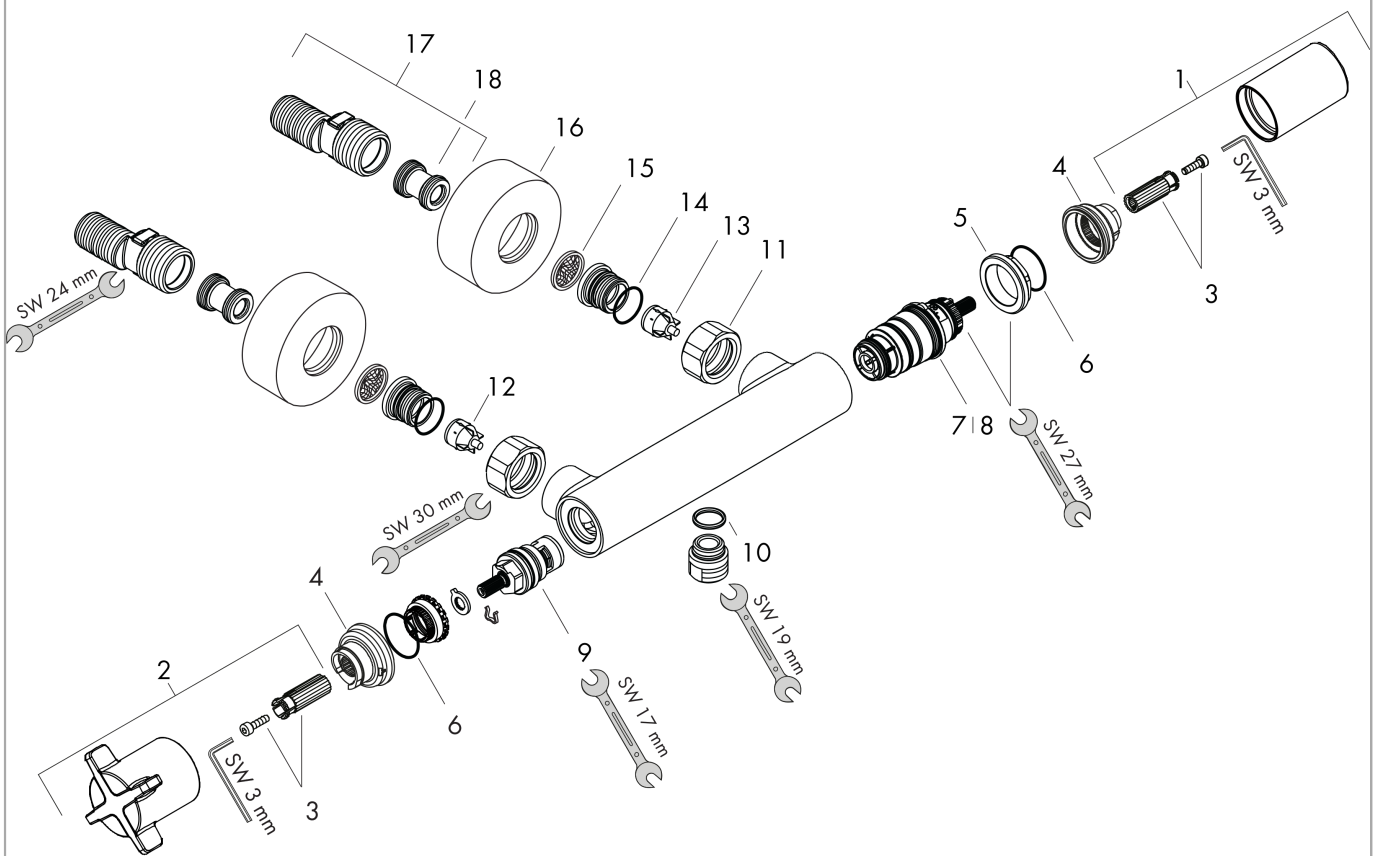


**AXOR Citterio E**  
**Shower thermostat for exposed installation**  
 Surfaces: **Chrome** Article Number: **36160000**



## Exploded Drawing

Year of production: >11/14



**AXOR Citterio E**  
**Shower thermostat for exposed installation**  
 Surfaces: **Chrome** Article Number: **36160000**



## Spare part list

Year of production: >11/14

Pos.	Description	Article Number	PC	PU
1	handle for thermostat	98287000	15	1
2	handle	92362000	16	1
3	handle fixing set	98290000	3	1
4	safety set	98289000	5	1
5	nut	98913000	6	1
6	O-ring 26x1,5	98390000	1	1
7	thermostat cartridge	98282000	14	1
8	cartridge for exchanged connections	92373000	18	1
9	shut off unit	94149000	8	1
10	O-ring 14x2	98129000	1	1
11	set of nuts	96157000	8	1
12	non return valve (pressure-resistant up to 2 MPa)	93136000	8	1
13	non return valve	96737000	8	1
14	O-ring 17x1,5	98137000	1	1
15	filter packing	96922000	3	1
16	escutcheon Ø 68 mm	96467000	6	1
17	set of S-unions (±12 mm)	94140000	10	1
18	noise reduction	96429000	2	1